

GLIMPSE™+

extra video camera
For use with the 36004 Glimpse™+



⚠️ WARNING

THIS PRODUCT CANNOT REPLACE RESPONSIBLE ADULT SUPERVISION.

- **STRANGULATION HAZARD** - Children have STRANGLED in cords. Keep this cord out of reach of children (more than 3 feet (0.9 m) away from the crib). Use enclosed Security Clips to help secure cord away from baby's reach. Never use extension cords with AC Adapters. Only use the AC Adapters provided.
- When an AC Adapter is plugged into an electrical outlet, do not touch the exposed end.
- Test monitor before first use, periodically, and when changing location of the Camera.
- Do not use monitor near water (such as bathtub, sink, etc.).
- Keep monitor away from heat sources (such as stoves, radiators, etc.).
- Make sure there is proper ventilation around all monitor components. Do not place on sofas, cushions, beds, etc. which may block ventilation.
- This product is not a toy. Do not allow children to play with it.
- This product contains small parts. Adult assembly required. Exercise care when unpacking and assembling the product.



⚠️ BATTERY WARNING

- Use only the original rechargeable battery provided. Please contact Summer Infant (USA), Inc. for replacement battery. Contact information can be found on the back page of these instructions or on the battery itself.
- Do not short-circuit supply terminals.
- Only the recommended battery or equivalent are to be used, volts and size.
- Remove battery when product is stored for long periods of time or when battery is exhausted.
- Dispose of exhausted battery properly.
- Keep all batteries away from children.

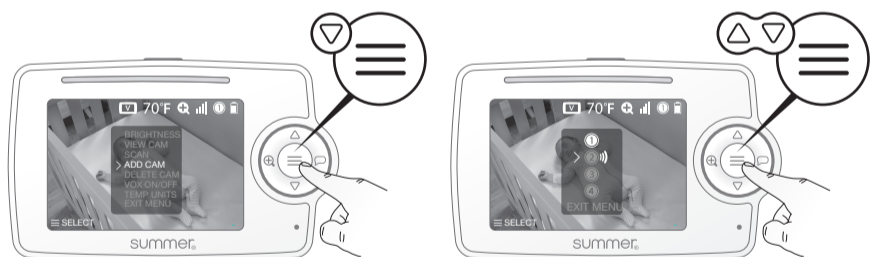
ADDING A CAMERA

Your digital video monitor accepts up to 4 total cameras.

You can select the one you want to view OR use the auto-scan mode to cycle through each camera on an 8-second rotation.

1. Make sure the power is on for the camera you want to add.
2. Press the MENU/SELECT button ≡ to enter menu screen.
3. Using the DOWN button ▽, scroll to ADD CAM and press the MENU/SELECT button ≡ to select. Using the UP or DOWN buttons △▽, scroll to the camera number you would like to add and press MENU/SELECT button ≡ to select.
4. Press the SYNC button on the back of the camera.

Three bars will appear next to the camera icon to indicate that it is syncing.



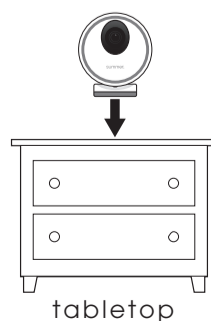
(If unsuccessful, repeat the above steps. Make sure the camera and monitor are next to each other for pairing.)

Extra Cameras: To order an additional camera (item #36064), please contact our Consumer Relations Team at: 401-671-6551 or www.summerinfant.com/contact for details.

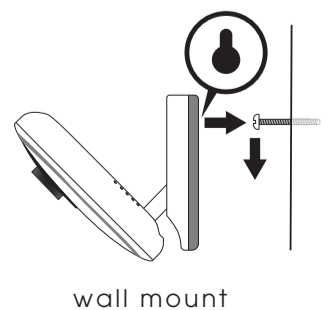
INSTALLING THE CAMERA

NOTE: For best picture focus, place camera 6 to 8 ft. from crib.

1. Plug in nursery camera.
2. Place camera on a flat surface, such as a dresser or shelf.
3. Or, mount the camera on a wall using the screw and wall anchor provided.

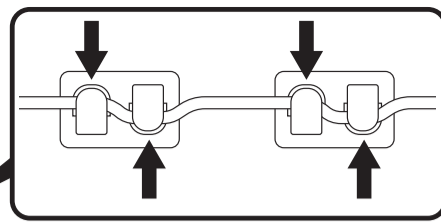
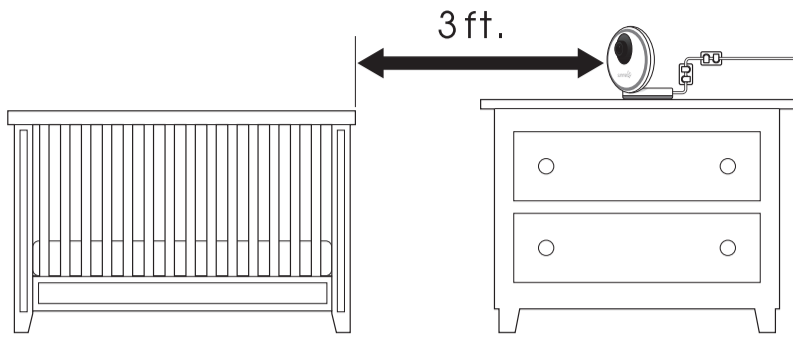


or



Secure the Camera Cord

NEVER place the camera or cords within 3-feet of the crib. Secure the cord to your wall using the 6 security clips included to keep the cord away from baby's reach.



Read all warnings prior to using this product.

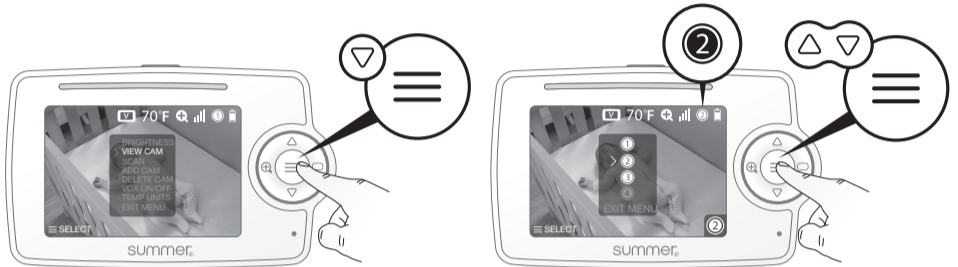
⚠ WARNING

STRANGULATION HAZARD: Children have strangled in cords. Keep this cord out of the reach of children (more than 3 ft. (0.9m) away).



SELECTING A CAMERA TO VIEW

1. Press the MENU/SELECT button ≡.
2. Using the DOWN button ▽, highlight VIEW CAM and press the MENU/SELECT button ≡ to select.
3. Press UP and DOWN buttons △▽ to select an available camera. *Blue color indicates paired cameras.*
4. Press MENU/SELECT button ≡ to confirm selection.



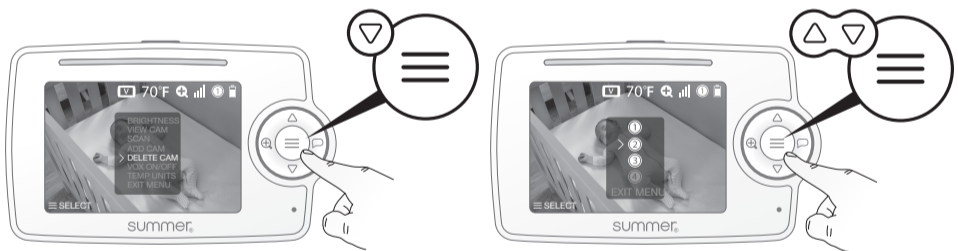
SCANNING CAMERAS

1. Press the MENU/SELECT button ≡.
2. Press the DOWN button ▽, select SCAN and press the MENU/SELECT button ≡. *Scanning cameras will begin, cycling through each active camera every 8 seconds.*
3. To stop scanning, press the MENU/SELECT button ≡.



DELETING A CAMERA

1. Press the MENU/SELECT button ≡.
2. Using the DOWN button ▽, highlight DELETE CAM and press the MENU/SELECT button ≡ to select.
3. Use the UP or DOWN buttons △▽ to highlight the camera you want to delete.
4. Press the MENU/SELECT button ≡ to delete that camera.



We're here to help!

If you have questions or need assistance, call our Consumer Relations Team at 401-671-6551 or visit www.summerinfant.com/contact

Do not return the product to the store.

FCC Information

This device complies with part 15 of the FCC Rules. Operation is subject to the following two conditions: (1) This device may not cause harmful interference, and (2) this device must accept any interference received, including interference that may cause undesired operation.

CAUTION: Changes or modifications not expressly approved by Summer Infant may void the users authority to operate this equipment.

NOTE: This equipment has been tested and found to comply with the limits for a Class B digital device, pursuant to part 15 of the FCC Rules. These limits are designed to provide reasonable protection against harmful interference in a residential installation. This equipment generates, uses and can radiate radio frequency energy and, if not installed and used in accordance with the instructions, may cause harmful interference to radio communications. However, there is no guarantee that interference will not occur in a particular installation. If this equipment does cause harmful interference to radio or television reception, which can be determined by turning the equipment off and on, the user is encouraged to try to correct the interference by one or more of the following measures:

- Reorient or relocate the receiver.
- Increase the separation between the equipment and the receiver.
- Connect the equipment into an outlet on a circuit different from that to which the receiver is connected.
- Consult the dealer or an experienced radio/TV technician for help.

CAUTION: 1. To comply with FCC RF exposure compliance requirements, a separation distance of at least 20 cm must be maintained between the antenna of this device and all persons. 2. This transmitter must not be co-located or operating in conjunction with any other antenna or transmitter.

Summer Infant (USA), Inc. Monitor Warranty Policy

Summer Infant (USA), Inc. will repair or replace (at our option) your unit free of charge for 12 months from the date of purchase if the unit is defective in workmanship or materials. To claim your repair/replacement, the product must be returned to Summer Infant along with a copy of the original purchase receipt. In the absence of the purchase receipt, the warranty will be 12 months from the date of manufacture. This warranty does not apply to normal wear or damage from misuse, abuse, improper storage and handling, installation, accident, unauthorized repair or alteration. Please contact our Consumer Relations Team by phone at 401-671-6551 or via e-mail at summerinfant.com/contact for details. For sale and use in the USA and Canada. The warranty is null and void if used outside its intended territory.



If you have questions or need assistance, contact our Consumer Relations Team at **401-671-6551** or visit www.summerinfant.com/contact

Summer Infant (USA), Inc.
1275 Park East Drive
Woonsocket, RI 02895
401-671-6551

Summer Canada, Ltd.
200 First Gulf Blvd., Unit C
Brampton, Ontario,
Canada L6W 4T5
905 456-8484

© 2018 Summer Infant (USA), Inc.
Colors and styles may vary.
Please retain information
for future reference.
Made in China. 6/18